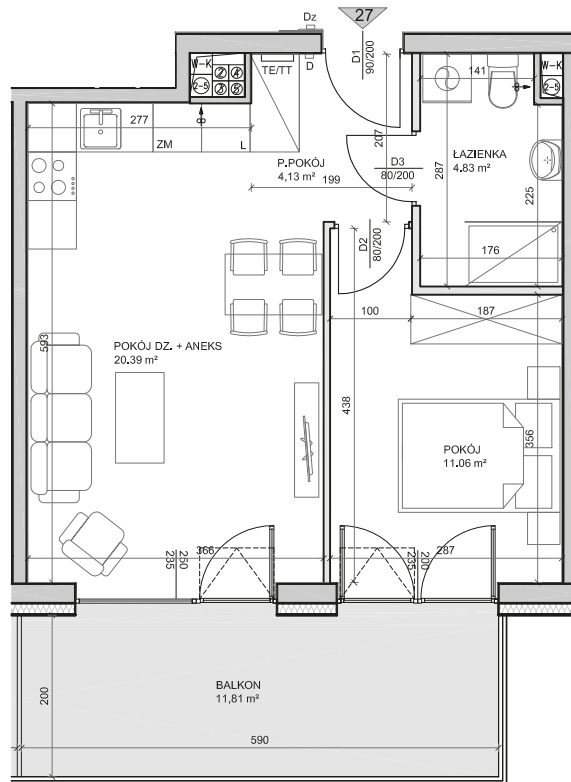
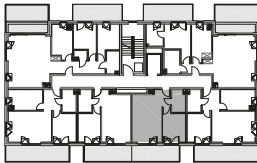


APARTAMENT NR 27

PU = 40,41 m²



IV PIĘTRO - WINDA

1	P.DZIENNY + ANEKS	20,39 m ²
2	POKÓJ	11,06 m ²
3	ŁAZIENKA	4,83 m ²
4	PRZEDPOKÓJ	4,13 m ²
5	BALKON	11,81 m ²

PU= 40.41 m²